

Fiber Coupling Stage

7TF2

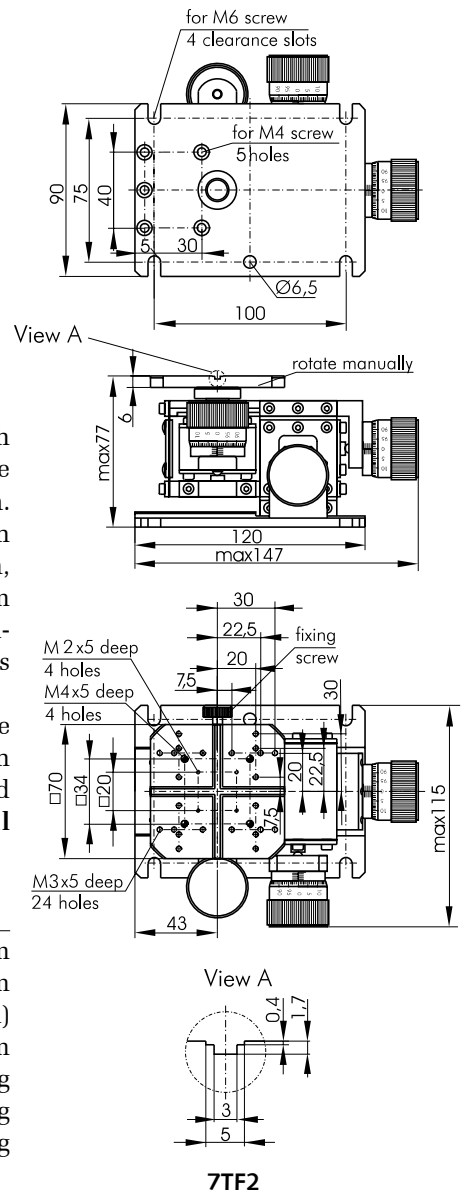


- Three axis
- Fiber coupling stage of flexure design
- Rotating platform on the top
- Compact block design
- Long-term stability
- Smooth motion

Flexure stages 7TF2 are ideal for high precision device manipulation. This stage suits almost any micropositioning applications range, for example, from fiber launch systems for singlemode, multimode and polarization maintaining fibers as well as waveguide alignment, through to the manipulation of microstructures in bioscience. **Fiber Coupling Stage** of flexure compact block design with high-resolution micrometers ensures long-termed stability

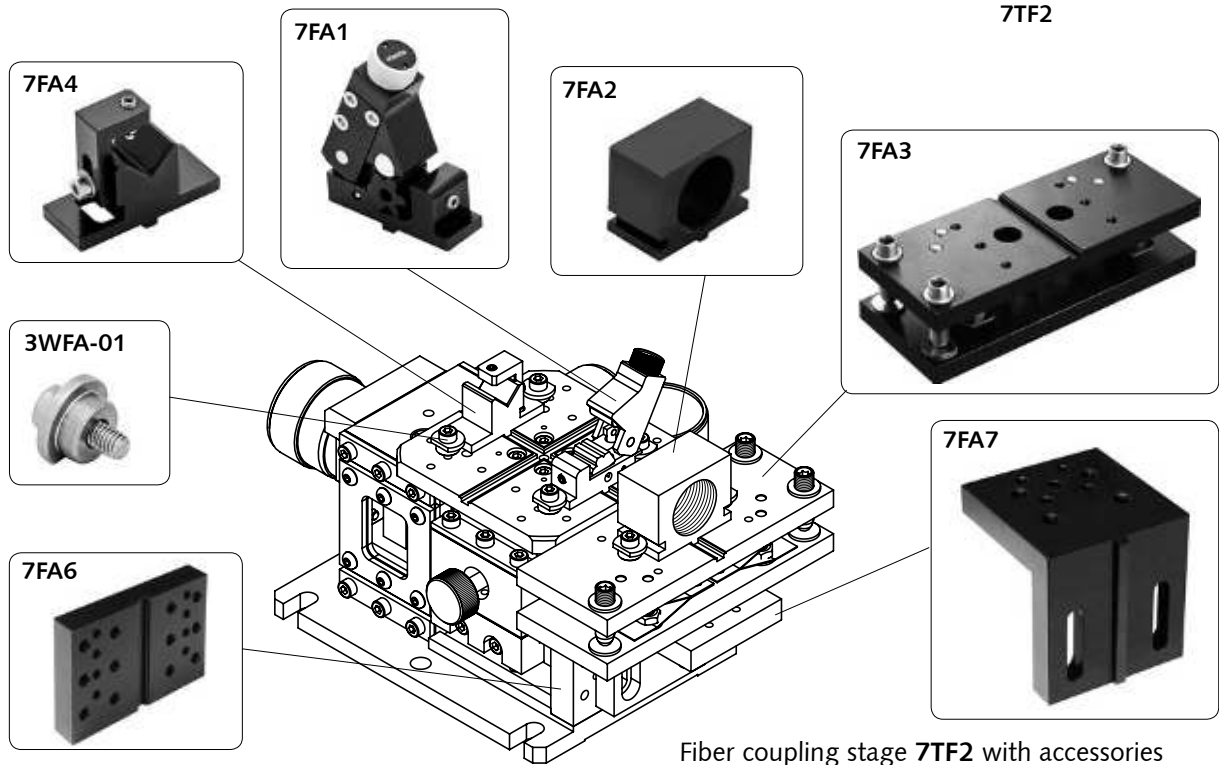
and good stiffness together with smooth motion without the severe limitations of stiction and friction. Flexure stages have a combination of overall size, travel, resolution, and low cost that makes them unique decision to meet the stringent requirements of photonics laboratory applications.

Vacuum compatible versions are delivered **on request**. Also as an option **fiber coupling stage** could be provided with **differential screws**.



SPECIFICATIONS

Travel range in each XYZ direction	2 mm
Sensitivity	0.2 μm
Reading accuracy	1.25 μm (1/2 division)
Cross-Talk	20 $\mu\text{m}/\text{mm}$
Mechanical stability	flexure design with Stainless Steel Spring
Load capacity	1.5 kg
Weight	1.6 kg



Fiber coupling stage 7TF2 with accessories



e-mail: sales@standa.it

www.standa.it



Phone: +370-5-2651474 Fax: +370-5-2651483



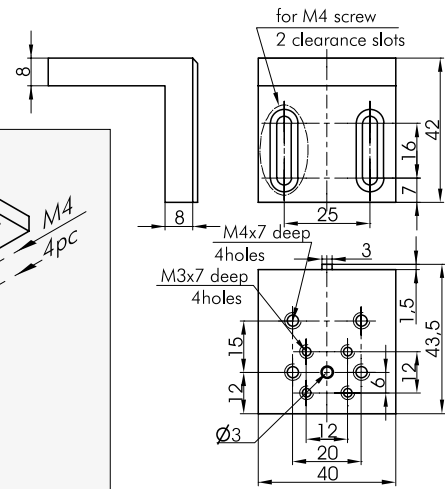
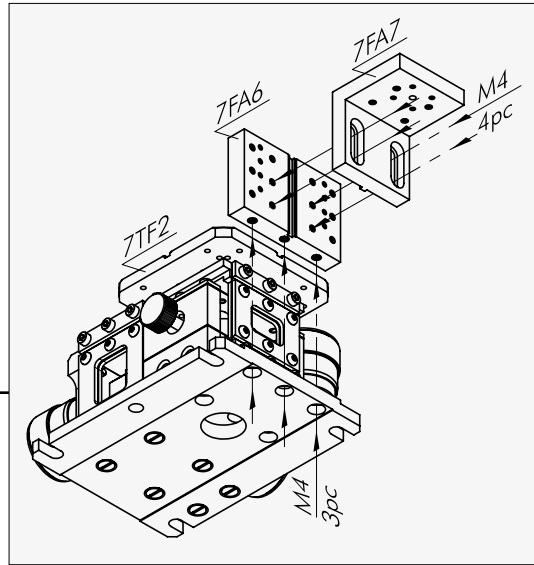
standa



Fixed Angle Bracket

7FA7

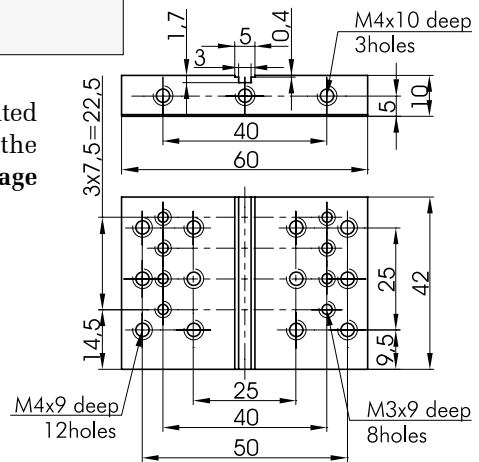

- Compatible with 7TF2



Adapter Plate



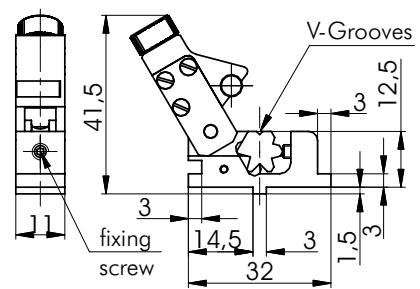
Fixed Angle Bracket 7FA7 is mounted through Adapter Plate 7FA6 to the fixed part of Fiber Coupling Stage 7TF2.

7FA6


Adjustable Force Fiber Clamp

7FA1

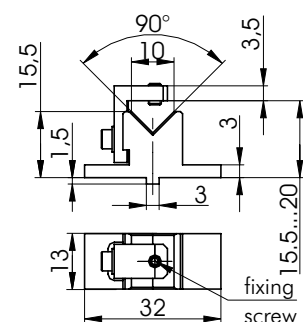

- V-Grooved insert has 5 different V-Grooves and one flat surface
- V-Grooves are suitable for fibers or cylindrical optical elements in the range of 125 µm to 2 mm in diameter (5 places) + one flat surface
- Adjustable force fiber clamping arm, 20 to 250 g
- Knob on the top is for adjusting the clamping force
- Compatible with 7TF2



Fiber Cable Clamp

7FA4


- This accessory prevents cabled fiber from being accidentally disturbed. Designed for cables fiber of 900 µm – 3 mm diameter
- Compatible with 7TF2



www.standa.it

e-mail: sales@standa.it



Phone: +370-5-2651483

Fax: +370-5-2651474


standa

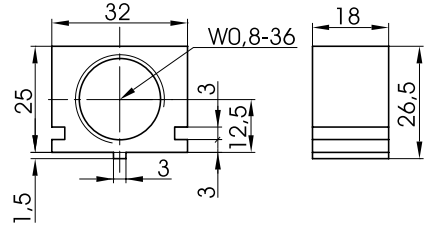

Optical Tables	1	Brackets & Rails	2	Base Mounts & Accessories	3	Optical Mounts	4	Optical Positioners	5	Base Positioners	6	Translation & Rotation Stages	7	Motorised Positioners & Controllers	8	Fine Adjustment Screws	9	Opto-Mechanics & Sets	10	Light Test & Measurement Instruments	11	Lasers & Laser Accessories	12
----------------	---	------------------	---	---------------------------	---	----------------	---	---------------------	---	------------------	---	-------------------------------	---	-------------------------------------	---	------------------------	---	-----------------------	----	--------------------------------------	----	----------------------------	----

Microscope Objective Holder

7FA2



- Standard RMS
- Microscope objective thread
- Wide range of micro objectives (see page 10-2)
- Compatible with 7TF2



e-mail: sales@standa.it

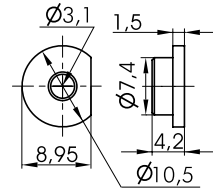
www.standa.it

Lock-Down Clamp

3WFA-01



- Compatible with 7TF2
- This clamps are used to fix the accessories to the mounting platform of the 7TF2.

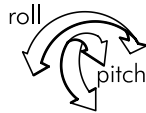


Phone: +370-5-2651474

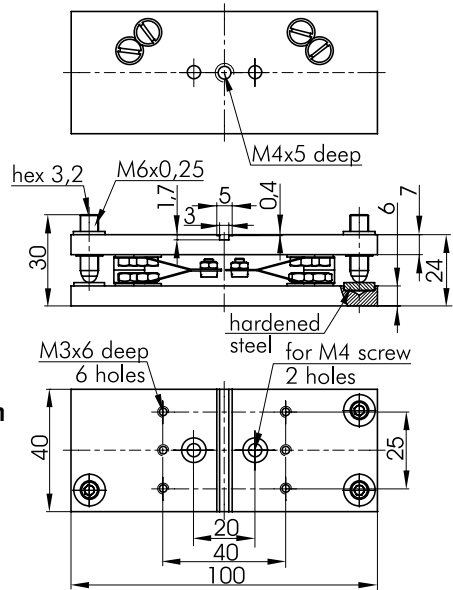
Fax: +370-5-2651483

Roll & Pitch Tilt Platform

7FA3

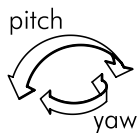


- Tilt (roll & pitch) platform
- Travel in z axis: -2mm, +4mm
- Travel roll, pitch $\pm 4^\circ$
- Resolution 10arcsec
- Compatible with 7TF2

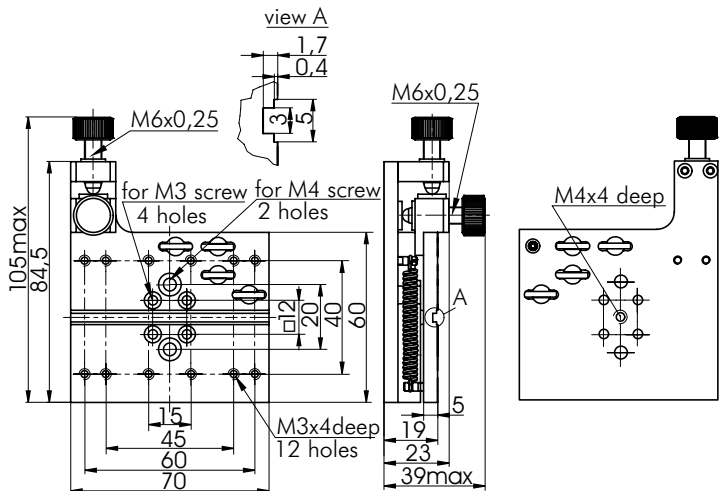


Pitch & Yaw Platform

7FA5



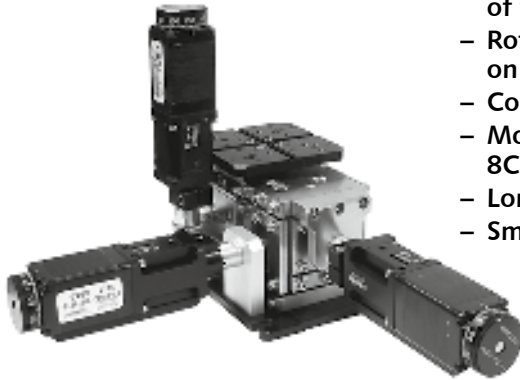
- Pitch yaw platform
- Yaw $\pm 4^\circ$
- Pitch $\pm 3^\circ$
- Resolution 10 arcsec
- Compatible with 7TF2



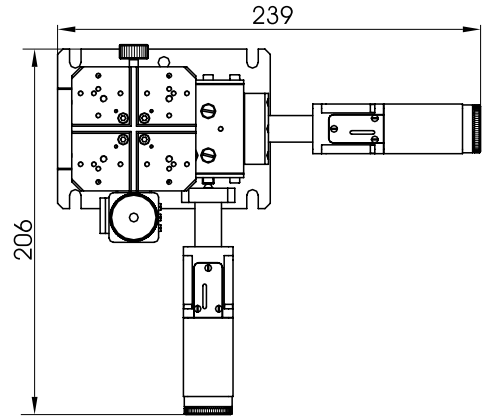
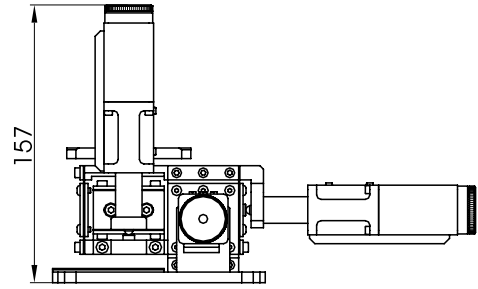
standa



Motorized Fiber Coupling Stage

8MTF2


- Fiber coupling stage of flexure design
- Rotating platform on the top
- Compact block design
- Motorized Actuator 8CMA28-10
- Long-term stability
- Smooth motion



Other dimensions
such as 7TF2
(page 7-27)

SPECIFICATIONS

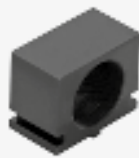
Travel range in each XYZ direction	2 mm
Resolution	0.2 μm
Cross-Talk	20 $\mu\text{m}/\text{mm}$
Mechanical stability	flexure design with Stainless Steel Spring
Load capacity	1.5 kg
Type of actuator	8CMA28-10
Cable	1.2 m length cable included
Motor connector	HDB15(M)
Weight	1.6 kg

Accessories for Fiber Coupling Stage

page 7-27



7FA1



7FA2



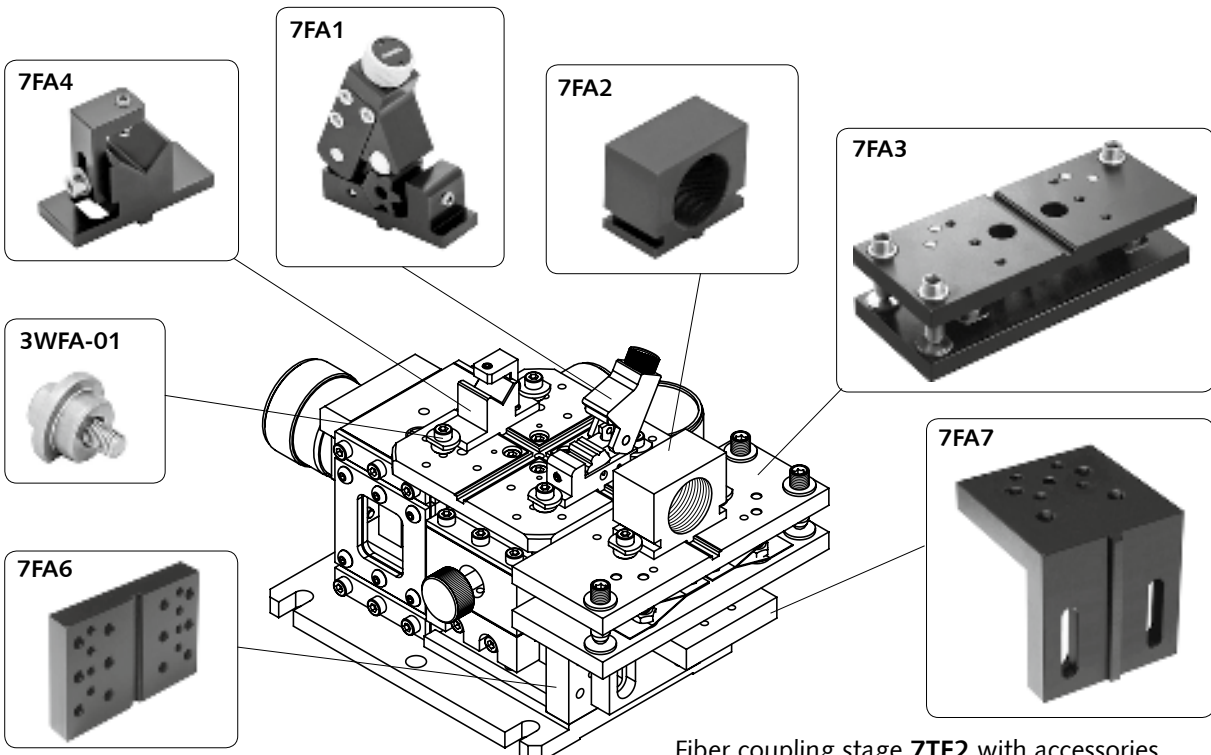
7FA3



7FA4



7FA5



Fiber coupling stage 7TF2 with accessories

